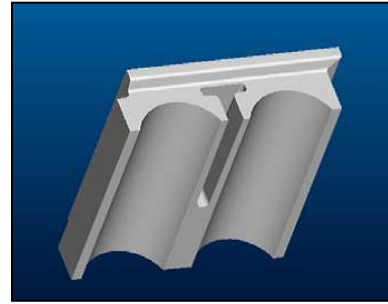


LS series

Waste-to-Energy Incinerator Linings

LS-75S



		Typical Value	Standard Deviation
Bulk Density: <i>ISO 5017</i> kg/m ³	2720	40
bs/cu.ft.	170	2.49
Open Porosity: <i>ISO 5017</i> %	12.4	1.3
Cold Crushing Strength: <i>ISO 10059</i> MPa	180	15
psi	26100	2175
Modulus of Rupture (RT): <i>ISO 5014</i> MPa	50	5
psi	7250	725
Thermal Conductivity: <i>Laser flash</i> 1000°C (1832°F) W/m.K	16.8	1.3
Abrasion Resistance (volume loss):..... <i>ASTM C704</i> cm ³	4.2	0.5
Oxidation Resistance (volume expansion):..... <i>ASTM C863</i> %	0.8	0.2
Chemical Composition: <i>ISO 21068</i>			
SiC %	73.0	0.7
Si ₃ N ₄ +Si ₂ N ₂ O %	19	0.5

LS-75S have special ingredients (additives) and are double-fired.
Oxidation resistance is conducted under steam atmosphere at 1000°C and evaluated by volume expansion.

simonsen a/s
Recycling – WtE
Møgelvangs Plads 7
DK-7900 Nykøbing Mors
DANMARK

An ISO-9001 certified company

QUALITY SYSTEM
DS/EN
ISO 9001



LIRR
SINOSTEEL LUOYANG INSTITUTE OF
REFRATORIES RESEARCH CO., LTD.
Luoyang, Henan Province
P. R. of China

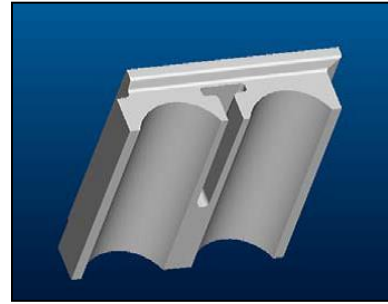
An ISO-9001, ISO-14001:2004 and
OHSAS 18001:1999 certified company



LS series

Waste-to-Energy Incinerator Linings

LS-85S



		Typical Value	Standard Deviation
Bulk Density: <i>ISO 5017</i> kg/m ³	2720	40
bs/cu.ft.	170	2.49
Open Porosity: <i>ISO 5017</i> %	12.4	1.3
Cold Crushing Strength: <i>ISO 10059</i> MPa	175	15
psi	25375	2175
Modulus of Rupture (RT): <i>ISO 5014</i> MPa	48	5
psi	6960	725
Thermal Conductivity: <i>Laser flash</i> 1000°C (1832°F) W/m.K	18	1.5
Abrasion Resistance (volume loss): <i>ASTM C704</i> cm ³	4.2	0.5
Oxidation Resistance (volume expansion): <i>ASTM C863</i> %	0.85	0.2
Chemical Composition: <i>ISO 21068</i>			
SiC %	81.5	0.7
Si ₃ N ₄ +Si ₂ N ₂ O %	11	0.5

LS-85S have special ingredients (additives) and are double-fired.
Oxidation resistance is conducted under steam atmosphere at 1000°C and evaluated by volume expansion.

simonsen a/s
Recycling – WtE
Møgelvangs Plads 7
DK-7900 Nykøbing Mors
DANMARK

An ISO-9001 certified company

QUALITY SYSTEM
DS/EN
ISO 9001



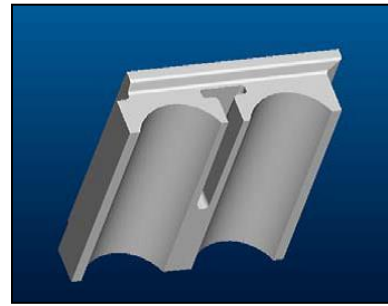
LIRR
SINOSTEEL LUOYANG INSTITUTE OF
REFRATORIES RESEARCH CO., LTD.
Luoyang, Henan Province
P. R. of China

An ISO-9001, ISO-14001:2004 and
OHSAS 18001:1999 certified company



LSO

Oxide Bonded Silicon Carbide for Waste-to-Energy Incinerator Linings



		Typical Value	Standard Deviation
Bulk Density: <i>ISO 5017</i> kg/m ³	2700	40
bs/cu.ft.	169	2.49
Open Porosity: <i>ISO 5017</i> %	15.0	1.3
Cold Crushing Strength: <i>ISO 10059</i> MPa	150	15
psi	21750	2175
Modulus of Rupture (RT): <i>ISO 5014</i> MPa	40	5
psi	5800	580
Thermal Conductivity: <i>Laser flash 1000°C (1832°F)</i> W/m.K	15.0	1.3
Abrasion Resistance (volume loss): <i>ASTM C704</i> cm ³	4.5	0.5
Oxidation Resistance (volume expansion): <i>ASTM C863</i> %	4.5	0.5
Chemical Composition: <i>ISO 21068</i>			
SiC %	88.0	0.7
SiO ₂%	6.0	0.4

simonsen a/s
Recycling – WtE
 Møgelvangs Plads 7
 DK-7900 Nykøbing Mors
 DANMARK

An ISO-9001 certified company



LIRR
SINOSTEEL LUOYANG INSTITUTE OF
REFRACTORIES RESEARCH CO., LTD.
 Luoyang, Henan Province
 P. R. of China

An ISO-9001, ISO-14001:2004 and OHSAS 18001:1999 certified company

