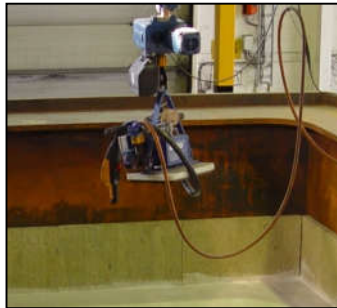


# octopus®

Vacuum Suction  
Aggregate for  
Refractory Materials



<b>Net weight of aggregate:</b>	..... kg	23
<b>Max. lifting power:</b>	..... kg	170
<b>Chemical composition of the gasket:</b>	.....	Neoprene
<b>Manual tilting:</b>	.....degrees	90
<b>Size of suction plate:</b>	.....mm	300 x 300
<b>Type of suction plate gasket:</b>	Interchangeable ring for "chiselled" plate	
<b>Supply system:</b>	Compressed air vacuum pump Mod.: "L" (pressure 4 to 5 bar, consumption 300 to 400 l/min.)	
<b>Hold and release control:</b>	Manual sliding valve placed on lateral working handle	
<b>Control system:</b>	1) Vacuometer for hold control 2) Sound and flashing alarm signal in case of vacuum loss	
<b>Reference rules:</b>	Designation according to EC guide lines	
<b>HS Tariff Number:</b>	84282020	

**simonsen a/s**  
Møgelvangs Plads 7  
DK-7900 Nykøbing Mors  
DANMARK

Tel: Int.+45 9669 1300  
Fax: Int.+45 9669 1301  
simonsen@simonsen.eu  
WebSite: www.simonsen.eu



Producer:  
ATA S.R.L. PRODUZIONE  
VENTOSE  
56031 Bientina (Pisa)  
Italy

# Lifting Capacities

## *octopus* Vacuum Lifter

Outside Dimensions of Sucking Plate		Inside Dimensions of Sucking Plate		Surface of Sucking Part		Lifting Power Vertical Position		Lifting Power Horizontal Position		Safety Margin	
mm	inches	mm	inches	cm <sup>2</sup>	sq.in.	kg	lbs.	kg	lbs.	kg	lbs.
275 x 275	10.8 x 10.8	231 x 231	9.1 x 9.1	534	83	135	298	170	375	360	794
250 x 250	9.8 x 9.8	206 x 206	8.1 x 8.1	424	66	110	243	135	298	285	628
225 x 225	8.9 x 8.9	181 x 181	7.1 x 7.1	328	50	85	187	105	231	220	485
200 x 200	7.9 x 7.9	156 x 156	6.1 x 6.1	243	37	60	132	75	165	165	364
300 x 300	11.8 x 11.8	256 x 256	10.1 x 10.1	656	102	170	375	215	474	440	970
325 x 325	12.8 x 12.8	281 x 281	11.1 x 11.1	790	123	205	452	250	551	535	1179
225 x 300	8.9 x 11.8	181 x 256	7.1 x 10.1	463	72	120	265	150	331	310	683
250 x 300	9.8 x 11.8	206 x 256	8.1 x 10.1	527	82	135	298	170	375	355	783
275 x 300	10.8 x 11.8	231 x 256	9.1 x 10.1	591	92	150	331	185	408	405	893
350 x 350	13.8 x 13.8	306 x 306	12.0 x 12.0	936	144	240	529	300	661	635	1400